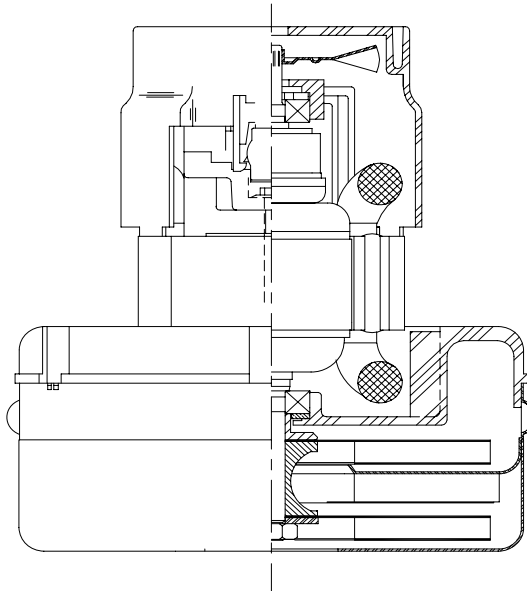


DESCRIPTION

- Two stage
- 120 volts
- 5.7"/145 mm diameter
- Ball/Ball bearings
- Single speed
- Peripheral bypass discharge
- Aluminum fan end bracket
- Thermoset commutator bracket

DESIGN APPLICATION

- Equipment operating in environments requiring separation of working air from motor ventilating air
- Designed to handle clean, dry, filtered air only



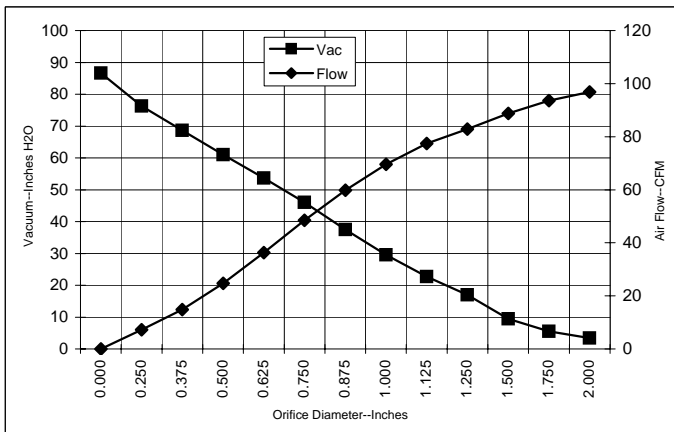
SPECIAL FEATURES

- Suitable for 120 volt AC operation, 50/60 Hz
- UL recognized, category PRGY2 (E47185)
- CSA Certified, MC# 168884, Class 1611-30
- Provision for grounding
- Skeleton-frame design
- Aluminum fan end bracket designed to dampen vibration and improve durability
- The GS vacuum motors offer a range of performance levels to meet design needs

TYPICAL MOTOR PERFORMANCE.*

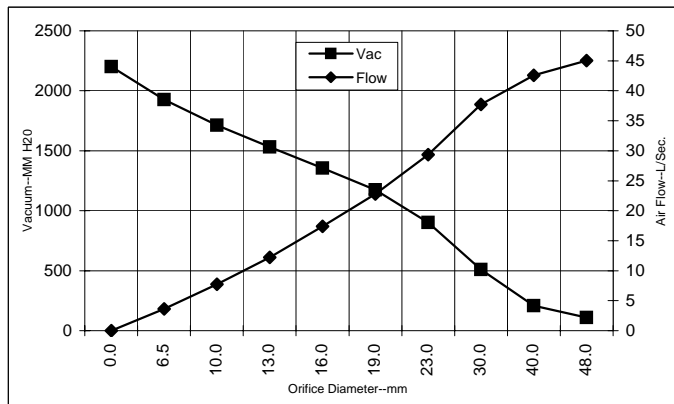
(At 120 volts, 60Hz, test data is corrected to standard conditions of 29.92 Hg, 68° F.)

ASTM DATA



Orifice (Inches)	Amps	Watts (In)	RPM	Vac (In.H ₂ O)	Flow (CFM)	Air Watts
2.000	7.6	867	17940	3.4	96.8	39
1.750	7.6	869	17750	5.5	93.6	61
1.500	7.7	875	17760	9.4	88.8	100
1.250	7.7	881	17750	17.0	82.8	169
1.125	7.8	884	17560	22.7	77.5	212
1.000	7.7	878	17750	29.6	69.6	249
0.875	7.6	863	17950	37.5	59.8	272
0.750	7.3	834	18340	46.0	48.5	270
0.625	6.9	790	18940	53.7	36.3	234
0.500	6.4	738	19730	61.0	24.7	180
0.375	5.9	675	20710	68.6	14.9	122
0.250	5.3	619	21710	76.3	7.3	66
0.000	4.8	562	22500	86.7	0.0	0

METRIC DATA



Orifice (mm)	Amps	Watts (In)	RPM	Vac (mm H ₂ O)	Flow (L/Sec)	Air Watts
48.0	7.6	868	17856	110	45.0	49
40.0	7.7	873	17757	209	42.6	89
30.0	7.7	883	17646	511	37.7	192
23.0	7.6	867	17900	902	29.4	267
19.0	7.3	833	18352	1173	22.8	269
16.0	6.9	792	18916	1356	17.4	236
13.0	6.5	743	19651	1530	12.2	186
10.0	5.9	684	20563	1714	7.7	131
6.5	5.4	622	21660	1927	3.6	69
0.0	4.8	562	22500	2201	0.0	0

Note: Metric performance data is calculated from the ASTM data above.

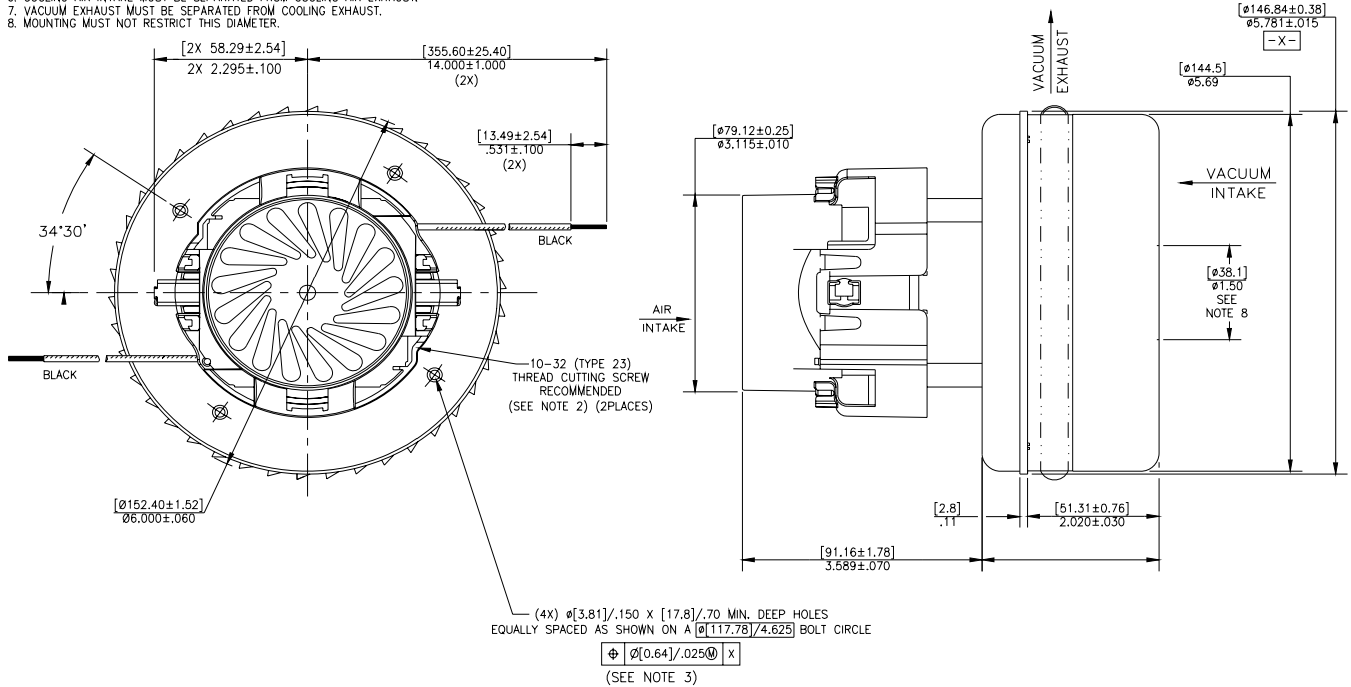
* Data represents performance of a typical motor sampled from a large production quantity. Individual motor data may vary due to normal manufacturing variations.

Test Specs:	120 volts	Minimum Sealed Vacuum:	80.0"	ORIFICE:	7/8 "	Minimum Vacuum:	36.0"	Maximum Watts:	965
--------------------	-----------	-------------------------------	-------	-----------------	-------	------------------------	-------	-----------------------	-----

DIMENSIONS

NOTES:

1. LEADS: 18GA STRANDED, LEADS CAN BE ANY COLOR EXCEPT GREEN OR GREEN WITH YELLOW STRIPE.
2. GROUNDING OR EARTHING PROVISIONS: USE HOLES AS INDICATED FOR GROUNDING OR EARTHING. REFER TO APPROPRIATE LISTING OR REGULATORY AGENCY FOR PROPER METHOD OF GROUNDING OR EARTHING.
3. RECOMMENDED SCREW SIZE 10-16 TYPE BT OR 25 THREAD CUTTING SCREW. MAXIMUM PENETRATION [17.40]/.685.
4. MOTOR IDENTIFICATION: MANUFACTURER'S NAME, MODEL NUMBER, VOLTAGE, FREQUENCY, INSPECTORS CODE, DATE OF MANUFACTURE, AGENCY RECOGNITION CODE, PLANT LOCATION CODE, PATENT INFORMATION "ONE OR MORE OF THE FOLLOWING U.S. PATENTS APPLY TO THIS MOTOR: 5482378; 5736805; 4669952; 4684835". AND COUNTRY OF ORIGIN.
5. ALLOW [0.0016 SQ W]/2.5 SQ IN. MIN. FOR COOLING AIR INTAKE.
6. COOLING AIR INTAKE MUST BE SEPARATED FROM COOLING AIR EXHAUST.
7. VACUUM EXHAUST MUST BE SEPARATED FROM COOLING EXHAUST.
8. MOUNTING MUST NOT RESTRICT THIS DIAMETER.



IMPORTANT NOTE: Pictorial and dimensional data are subject to change without notice. Contact factory for current revision levels.

WARNING - AMETEK Global Motor Division thru-flow vacuum motors must never be used in applications in which wet or moist conditions are involved, where dry chemicals or other volatile materials are present, or where airflow may be restricted or blocked. Such motors are designed to permit the vacuumed air to pass over the electrical winding to cool it. Thus any foam, liquid (including water), dry chemical, or other foreign substance coming in contact with electrical conductors could cause combustion (depending on volatility) or electrical shock. Failure to observe these precautions could result in property damage and severe personal injury, including death in extreme cases. All applications incorporating Ametek commercial motors should be submitted to Underwriters Laboratories Inc. or other appropriate organizations or agencies for testing specifically related to the safety of your equipment.

AMETEK - Global Motors
 627 Lake Street
 Kent, Ohio 44240
 U.S.A.
 Tel: (330) 673-3451 Fax: (330) 677-3812
 www.specialtymotors.com or www.lambelectric.com