



AMETEK
LAMB ELECTRIC - AITS

Product Bulletin

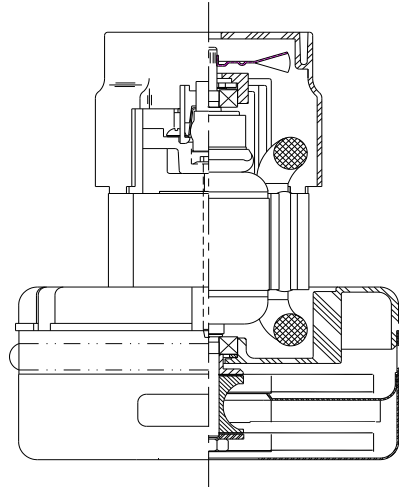
Model: 122436-00

DESCRIPTION

- Two stage
- 240 volts
- 5.7"/145 mm diameter
- Double ball bearings
- Single speed
- Peripheral bypass discharge
- Thermoset fan end bracket
- Aluminum commutator bracket

DESIGN APPLICATION

- Equipment operating in environments requiring separation of working air from motor ventilating air
- Designed to handle clean, dry, filtered air only



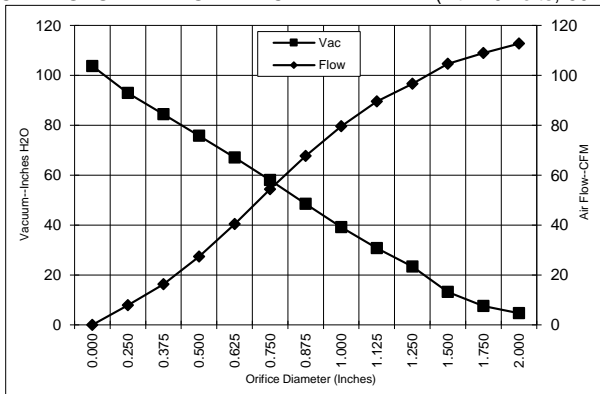
SPECIAL FEATURES

- Suitable for 240 volt AC operation, 50/60 Hz
- UL recognized, category PRGY2 (E47185)
- Provision for grounding
- Open frame design
- The Lamb Electric vacuum motor line offers a wide range of performance levels to meet design needs

TYPICAL MOTOR PERFORMANCE.*

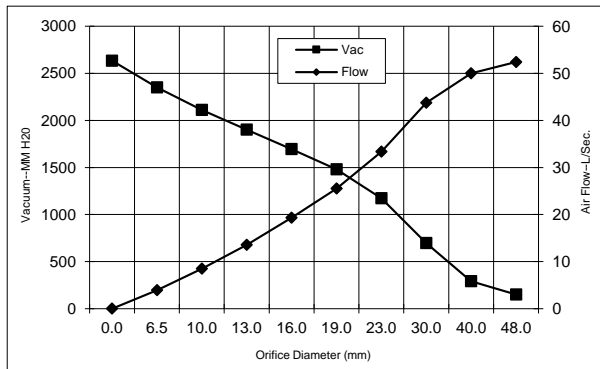
(At 240 volts, 60Hz, test data is corrected to standard conditions of 29.92 Hg, 68° F.)

ASTM DATA



Orifice (Inches)	Amps	Watts (In)	RPM	Vac (In.H2O)	Flow (CFM)	Air Watts
2.000	5.0	1152	20530	4.7	112.7	62
1.750	5.0	1158	20430	7.5	108.9	96
1.500	5.1	1170	20330	13.2	104.6	162
1.250	5.1	1193	20130	23.4	96.6	265
1.125	5.2	1197	20030	30.7	89.5	323
1.000	5.2	1194	20030	39.1	79.6	366
0.875	5.1	1172	20230	48.5	67.7	385
0.750	4.9	1133	20630	58.1	54.3	370
0.625	4.6	1073	21320	67.1	40.4	318
0.500	4.3	998	22210	75.7	27.4	244
0.375	3.9	919	23300	84.4	16.3	161
0.250	3.6	854	24400	92.9	7.9	86
0.000	3.4	804	25290	103.7	0.0	0

METRIC DATA



Orifice (mm)	Amps	Watts (In)	RPM	Vac (mm H2O)	Flow (L/Sec)	Air Watts
48.0	5.0	1155	20486	151	52.4	77
40.0	5.0	1166	20360	292	50.0	142
30.0	5.2	1195	20075	696	43.8	297
23.0	5.1	1178	20180	1172	33.4	380
19.0	4.9	1132	20644	1479	25.5	369
16.0	4.6	1075	21292	1695	19.3	320
13.0	4.3	1006	22121	1902	13.5	251
10.0	4.0	931	23137	2110	8.5	173
6.5	3.7	857	24345	2349	3.9	90
0.0	3.4	804	25290	2634	0.0	0

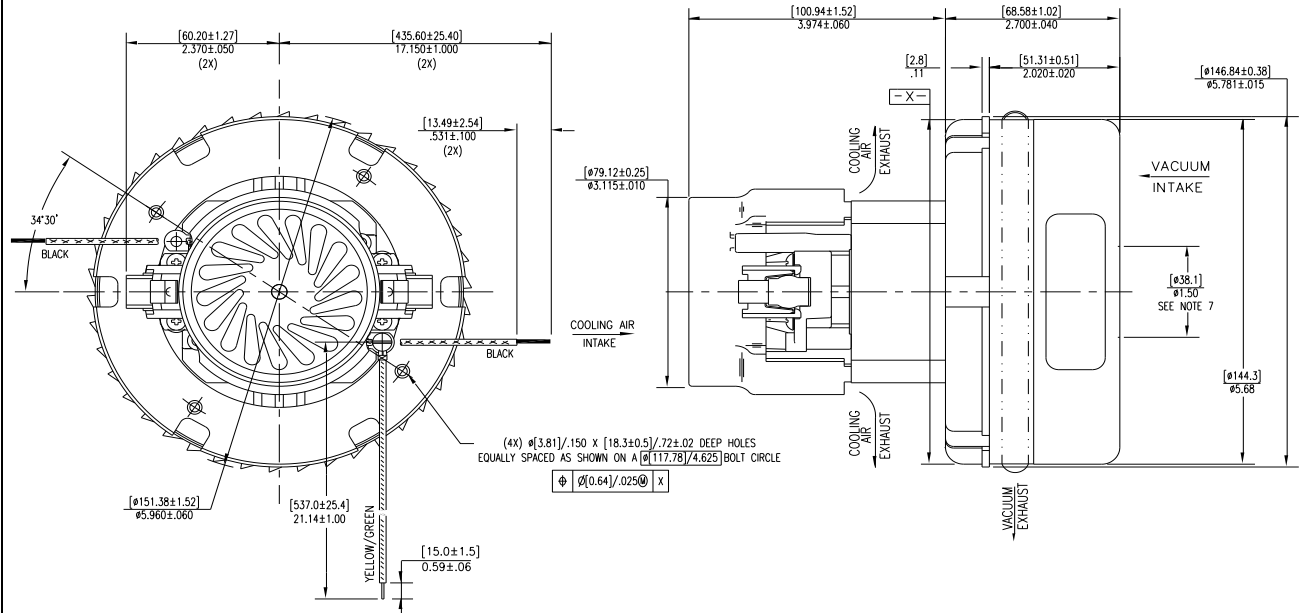
Note: Metric performance data is calculated from the ASTM data above.

* Data represents performance of a typical motor sampled from a large production quantity. Individual motor data may vary due to normal manufacturing variations

Test Specs:	240 volts	Minimum Sealed Vacuum: 97.5"	ORIFICE:	13 mm	Minimum Vacuum: 71.2"	Maximum Watts:	1035
--------------------	-----------	-------------------------------------	-----------------	-------	------------------------------	-----------------------	------

DIMENSIONS

- NOTES:
- LEADS: 18GA STRANDED.
 - MOTOR IDENTIFICATION: MANUFACTURER'S NAME, MODEL NUMBER, VOLTAGE, FREQUENCY, INSPECTORS CODE, DATE OF MANUFACTURE, AGENCY RECOGNITION CODE, PLANT LOCATION CODE, PATENT INFORMATION, ONE OR MORE OF THE FOLLOWING PATENTS APPLY TO THIS MOTOR: 5482378; 5736805; 4669952; 4684835, AND COUNTRY OF ORIGIN.
 - ALLOW 10.0016 SQ MI/2.5 SQ IN. MIN. FOR COOLING AIR INTAKE.
 - COOLING AIR INTAKE MUST BE SEPERATED FROM COOLING AIR EXHAUST.
 - VACUUM EXHAUST MUST BE SEPERATED FROM COOLING EXHAUST.
 - MOUNTING MUST NOT RESTRICT THIS DIAMETER.



IMPORTANT NOTE: Pictorial and dimensional data are subject to change without notice. Contact factory for current revision levels.

WARNING - When using AMETEK Lamb Electric bypass motors in machines that come in contact with foam, liquid (including water), or other foreign substances, the machine must be designed and constructed to prevent those substances from reaching the fan system, motor housing, and electrical components. Lamb Electric vacuum motors other than hazardous duty models should not be applied in machines that come in contact with dry chemicals or other volatile materials. Failure to observe these precautions could cause flashing (depending on volatility) or electrical shock which could result in property damage and severe bodily injury, including death in extreme cases. All applications incorporating Lamb Electric motors should be submitted to appropriate organizations or agencies for testing specifically related to the safety of your equipment.

AMETEK/Floorcare & Specialty Motors
www.ametekfsm.com