



Floorcare & Specialty Motors

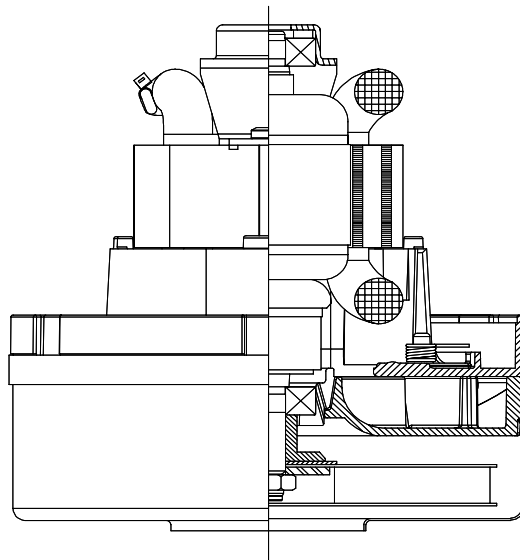
Model: 122202-00

DESCRIPTION

- One stage
- 4.73"/120 mm diameter
- Double ball bearings
- Single speed
- Thru-flow discharge
- Thermoset fan end bracket
- Stamped-steel end bracket

DESIGN APPLICATION

- Equipment operating in environments not requiring separation of working air from motor ventilating air
- Designed to handle clean, dry, filtered air only



SPECIAL FEATURES

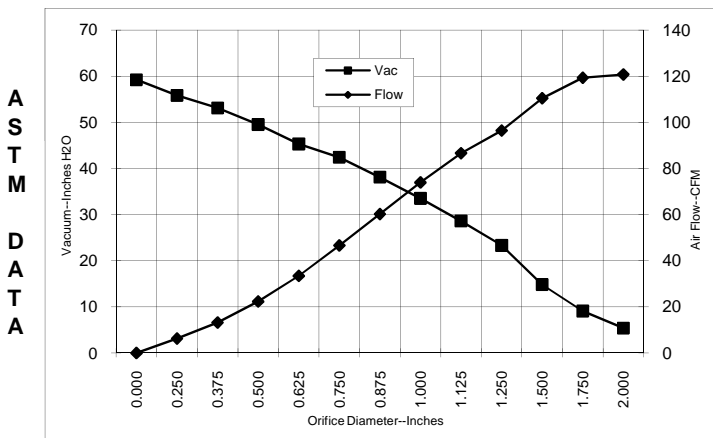
- Patented High Efficiency Diffusion
- 36% Overall Efficiency
- WL - World Lamination
- Single Stage
- UL recognized, category PRGY2 (E47185)
- Suitable for 240 volt AC operation, 50 or 60 Hz
- "Curved" brushes for longer life.



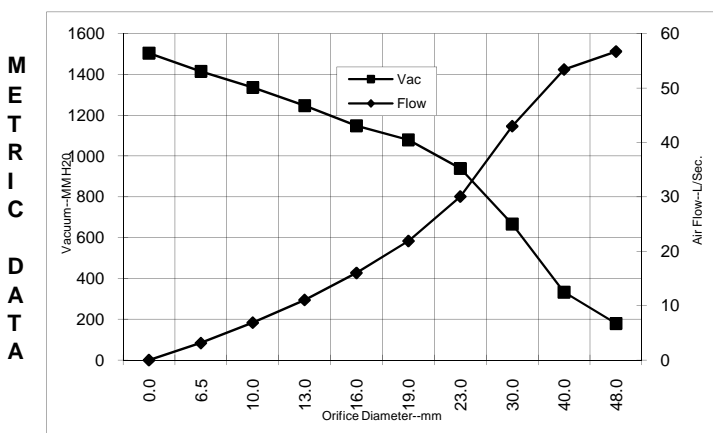
**** Preliminary ****

TYPICAL MOTOR PERFORMANCE.*

(At 240 volts, 60Hz, test data is corrected to standard conditions of 29.92 Hg, 68° F.)



Orifice (Inches)	Amps	Watts (In)	RPM	Vac (In.H ₂ O)	Flow (CFM)	Air Watts
2.000	3.9	874	22920	5.4	120.7	76
1.750	3.8	871	23030	9.1	119.3	127
1.500	3.8	865	23130	14.8	110.4	191
1.250	3.7	841	23430	23.3	96.4	263
1.125	3.6	811	23730	28.6	86.6	291
1.000	3.4	783	24230	33.5	73.9	291
0.875	3.2	736	25030	38.1	60.2	269
0.750	3.0	680	25930	42.4	46.6	232
0.625	2.7	617	27130	45.3	33.4	178
0.500	2.5	567	28230	49.5	22.3	130
0.375	2.3	527	29130	53.1	13.2	82
0.250	2.2	498	30030	55.8	6.3	41
0.000	2.0	470	30730	59.2	0.0	0



Orifice (mm)	Amps	Watts (In)	RPM	Vac (mm H ₂ O)	Flow (L/Sec)	Air Watts
48.0	3.9	873	22968	179	56.7	98
40.0	3.8	867	23100	332	53.4	172
30.0	3.6	825	23595	666	43.0	278
23.0	3.3	748	24830	939	30.0	275
19.0	3.0	679	25954	1078	21.9	231
16.0	2.7	620	27082	1148	16.0	180
13.0	2.5	572	28120	1247	11.0	135
10.0	2.3	533	28995	1335	6.9	89
6.5	2.2	499	29985	1414	3.1	43
0.0	2.0	470	30730	1504	0.0	0

Note: Metric Performance data is calculated from the ASTM data above.

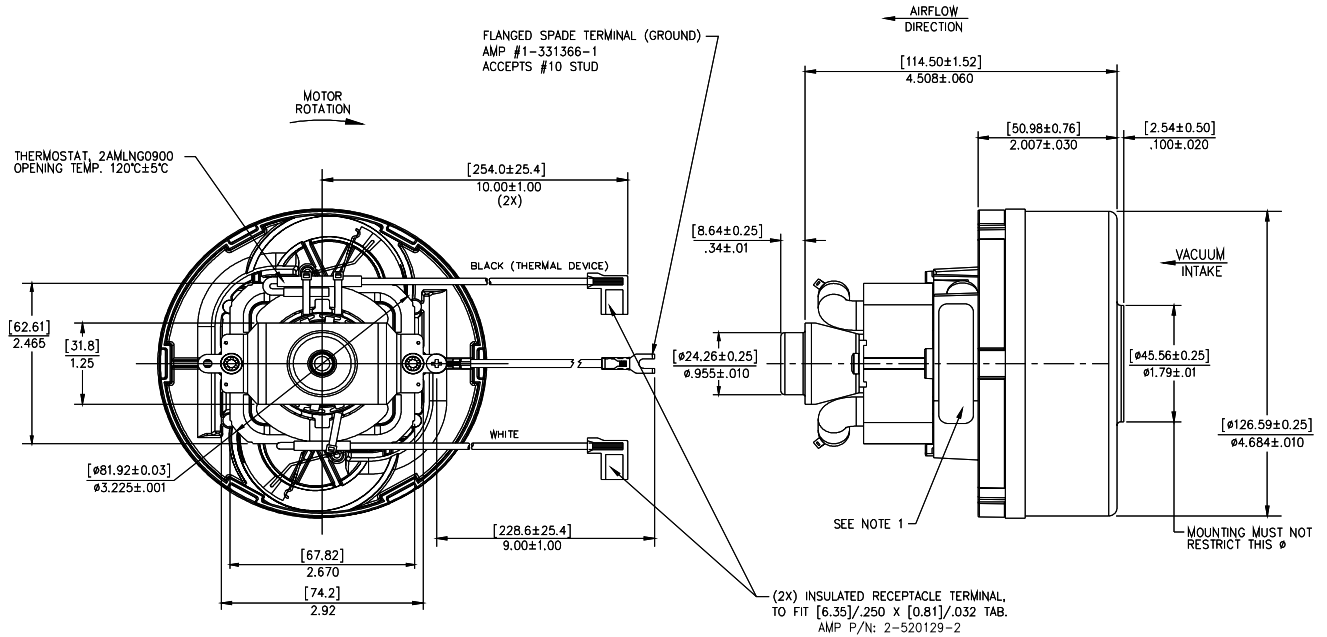
* Data represents performance of a typical motor sampled from a large production quantity. Individual motor data may vary due to normal manufacturing variations.

Test Specs:	240 volts	Minimum Sealed Vacuum:	55.0	ORIFICE:	7/8"	Minimum Vacuum:	33.5	Maximum Watts:	784
--------------------	------------------	-------------------------------	-------------	-----------------	-------------	------------------------	-------------	-----------------------	------------

DIMENSIONS

NOTES:

1. MODEL NUMBER, DATE OF MANUFACTURE, PLANT LOCATION CODE, AGENCY RECOGNITION CODE, INSPECTOR'S CODE, MANUFACTURER'S NAME, VOLTAGE AND FREQUENCY, TO APPEAR ON MOTOR.
2. POWER LEADS: 18GA STRANDED, GROUNDING LEAD: 18GA STRANDED (GREEN OR GREEN WITH YELLOW STRIPE).



**** Preliminary ****

IMPORTANT NOTE: Pictorial and dimensional data are subject to change without notice. Contact factory for current revision levels.

WARNING - AMETEK Lamb Electric thru-flow vacuum motors must never be used in applications in which wet or moist conditions are involved, where dry chemicals or other volatile materials are present, or where airflow may be restricted or blocked. Such motors are designed to permit the vacuumed air to pass over the electrical winding to cool it. Thus any foam, liquid (including water), dry chemical, or other foreign substance coming in contact with electrical conductors could cause combustion (depending on volatility) or electrical shock. Failure to observe these precautions could result in property damage and severe personal injury, including death in extreme cases. All applications incorporating Lamb Electric motors should be submitted to Underwriters Laboratories Inc. or other appropriate organizations or agencies for testing specifically related to the safety of your equipment.

AMETEK/Lamb Electric Division
627 Lake Street
Kent, Ohio 44240
U.S.A.
Tel: (330) 673-3451 Fax: (330) 673-8994
www.lambelectric.com