

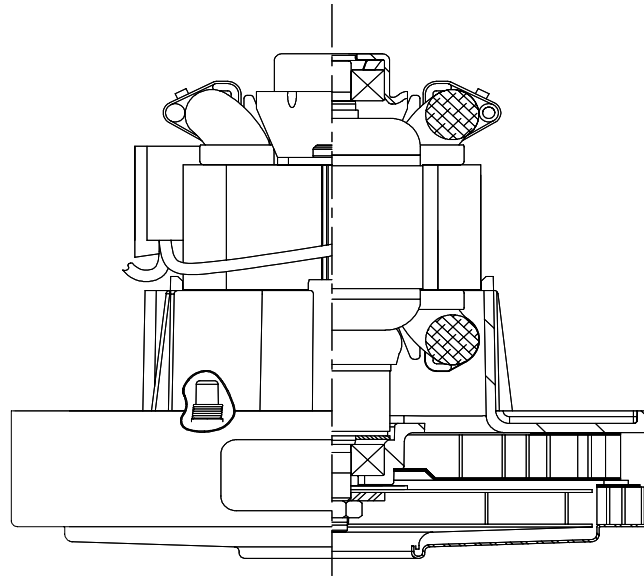


DESCRIPTION

- One stage
- 240 volts
- 5.3"/135mm diameter
- Ball/Ball bearing system
- Single speed
- Thru-flow discharge
- Thermoset fan end bracket
- Steel End-bracket

DESIGN APPLICATION

- Equipment operating in environments not requiring separation of working air from motor ventilating air
- Designed to handle clean, dry, filtered air only

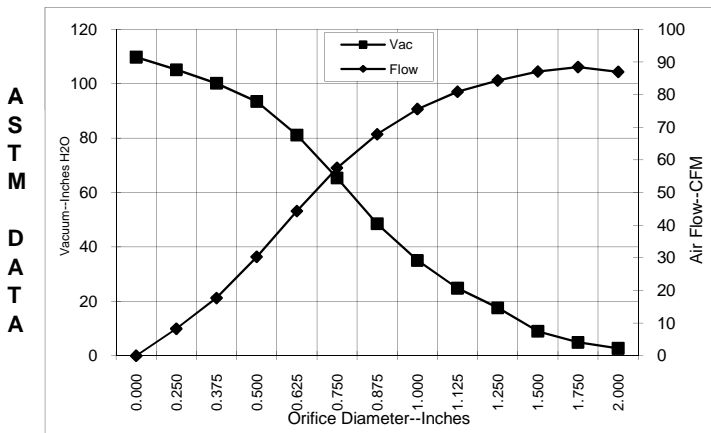


SPECIAL FEATURES

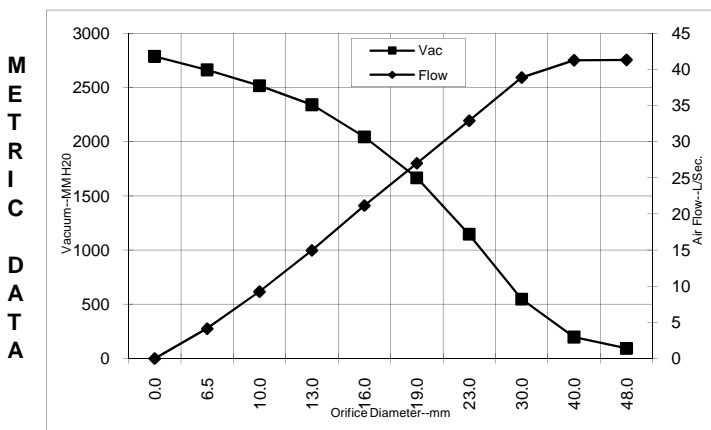
- Suitable for 240 volt AC operation 50/60 Hz
- UL recognized, category PRGY2 (E47185)
- Provision for grounding per UL 1563
- Skeleton-frame construction
- **Patented Advantek diffusion**
- **High efficiency fan system**

TYPICAL MOTOR PERFORMANCE.*

(At 240 volts, 60Hz, test data is corrected to standard conditions of 29.92 Hg, 68° F.)



Orifice (Inches)	Amps	Watts (In)	RPM	Vac (In.H2O)	Flow (CFM)	Air Watts
2.000	5.5	1291	28870	2.7	86.9	28
1.750	5.5	1288	28870	4.9	88.4	51
1.500	5.5	1280	28970	9.0	87.0	92
1.250	5.4	1265	29170	17.6	84.3	174
1.125	5.3	1249	29470	24.8	80.8	235
1.000	5.2	1223	29770	35.0	75.5	311
0.875	5.1	1182	30160	48.5	67.8	386
0.750	4.8	1126	30960	65.3	57.5	441
0.625	4.5	1046	32050	81.1	44.3	422
0.500	4.1	961	33440	93.4	30.3	332
0.375	3.8	893	34930	100.1	17.7	208
0.250	3.5	832	36220	105.1	8.3	102
0.000	3.2	763	38220	109.7	0.0	0



Orifice (mm)	Amps	Watts (In)	RPM	Vac (mm H2O)	Flow (L/Sec)	Air Watts
48.0	5.5	1290	28870	93	41.3	38
40.0	5.5	1282	28940	197	41.3	80
30.0	5.4	1256	29335	548	38.9	208
23.0	5.1	1192	30063	1146	32.9	367
19.0	4.8	1124	30982	1667	27.0	441
16.0	4.5	1049	32006	2044	21.2	423
13.0	4.1	970	33301	2341	15.0	341
10.0	3.8	903	34707	2517	9.2	227
6.5	3.5	835	36156	2663	4.1	107
0.0	3.2	763	38220	2786	0.0	0

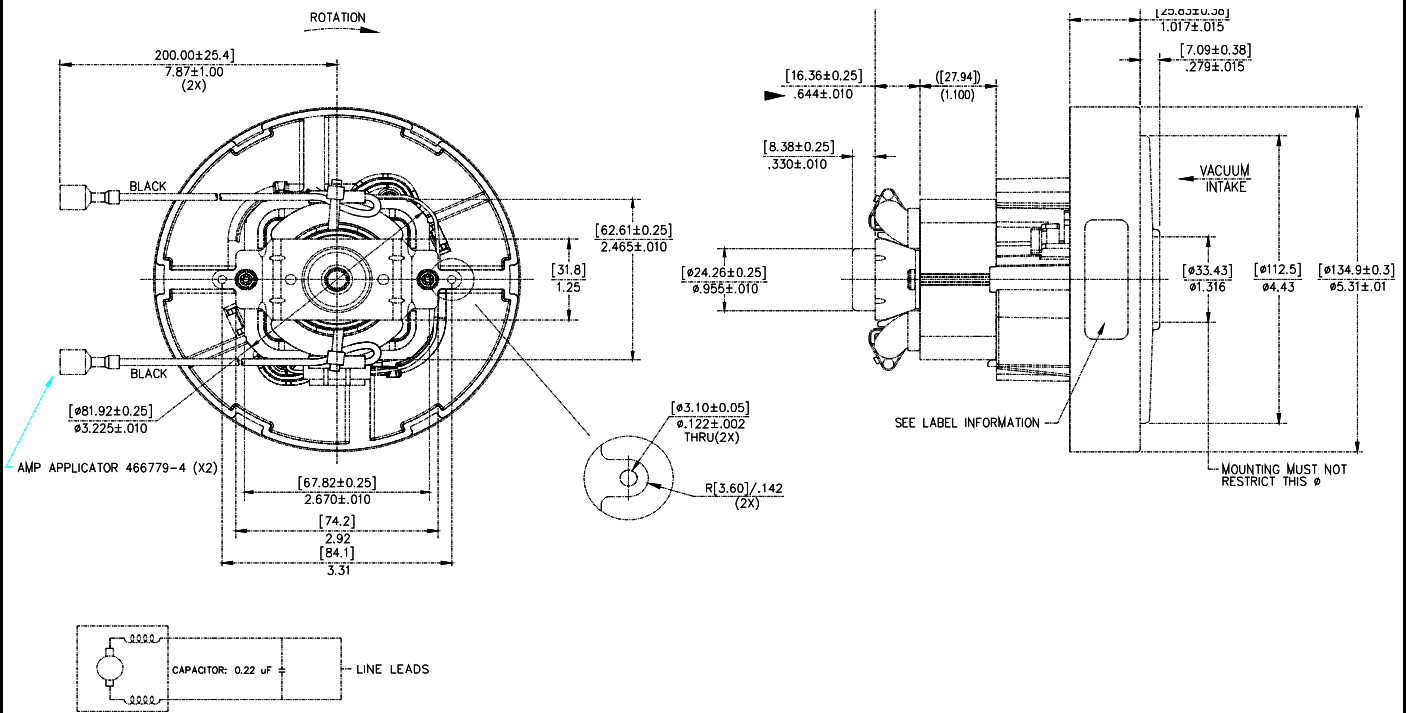
Note: Metric performance data is calculated from the ASTM data above.

* Data represents performance of a typical motor sampled from a large production quantity. Individual motor data may vary due to normal manufacturing variations.

Test Specs:	120 volts	Minimum Sealed Vacuum:	TBD	ORIFICE:	7/8"	Minimum Vacuum:	TBD	Maximum Watts:	TBD
-------------	-----------	------------------------	-----	----------	------	-----------------	-----	----------------	-----



DIMENSIONS



IMPORTANT NOTE: Pictorial and dimensional data are subject to change without notice. Contact factory for current revision levels.

WARNING - AMETEK Lamb Electric thru-flow vacuum motors must never be used in applications in which wet or moist conditions are involved, where dry chemicals or other volatile materials are present, or where airflow may be restricted or blocked. Such motors are designed to permit the vacuumed air to pass over the electrical winding to cool it. Thus any foam, liquid (including water), dry chemical, or other foreign substance coming in contact with electrical conductors could cause combustion (depending on volatility) or electrical shock. Failure to observe these precautions could result in property damage and severe personal injury, including death in extreme cases. All applications incorporating Lamb Electric motors should be submitted to Underwriters Laboratories Inc. or other appropriate organizations or agencies for testing specifically related to the safety of your equipment.

AMETEK/Floorcare & Specialty Motors
627 Lake Street
Kent, Ohio 44240
U.S.A.
Tel: (330) 673-3451 Fax: (330) 677-3812
www.ameteksfm.com