

LAMB ELECTRIC DIVISION

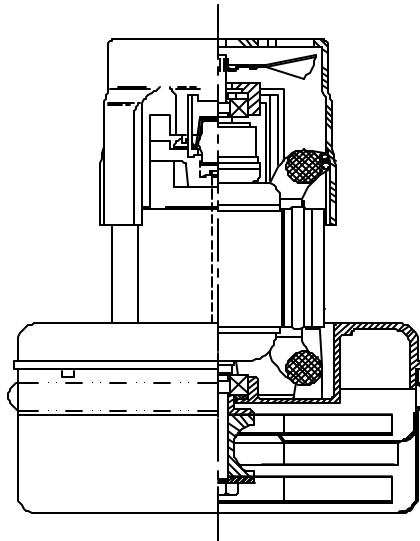
Model: 117396-00

DESCRIPTION

- Two stage
- 230 volts
- 5.7"/145 mm diameter
- Double ball bearings
- Single speed
- Peripheral bypass discharge
- Thermoset fan end bracket
- Aluminum commutator bracket

DESIGN APPLICATION

- Equipment operating in environments requiring separation of working air from motor ventilating air
- Designed to handle clean, dry, filtered air only



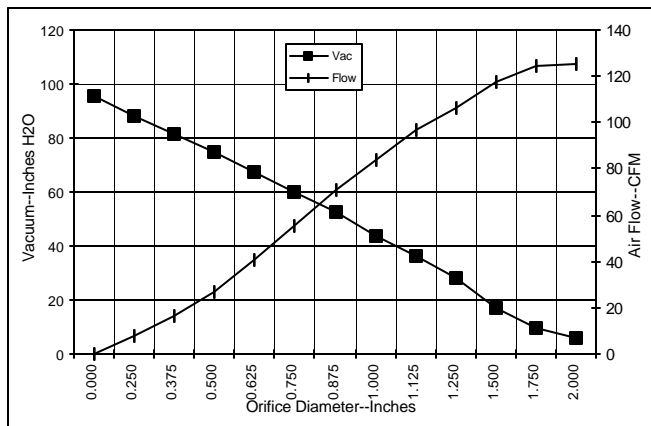
SPECIAL FEATURES

- Suitable for 230 volt AC operation, 50/60 Hz
- UL recognized, category PRGY2 (E471855)
- Provision for grounding
- Skeleton frame design
- The Lamb vacuum motor line offers a wide range of performance levels to meet design needs.

TYPICAL MOTOR PERFORMANCE.*

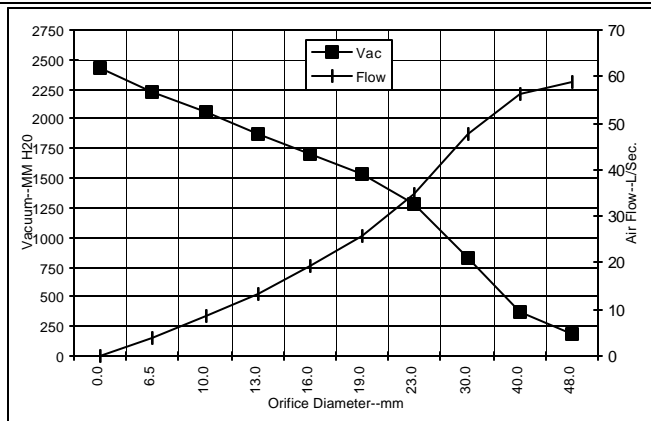
(At 230 volts, 60Hz, test data is corrected to standard conditions of 29.92 Hg, 68° F.)

ASTM DATA



Orifice (Inches)	Amps	Watts (In)	RPM	Vac (In.H ₂ O)	Flow (CFM)	Air Watts
2.000	6.1	1314	18904	5.8	125.5	86
1.750	6.1	1323	18848	9.8	124.2	144
1.500	6.2	1333	18779	16.7	117.3	230
1.250	6.2	1343	18676	28.5	106.4	357
1.125	6.2	1336	18731	36.1	96.7	410
1.000	6.1	1312	18912	43.9	84.2	435
0.875	5.9	1279	19177	52.7	70.6	437
0.750	5.6	1211	19701	60.1	55.2	390
0.625	5.2	1138	20430	67.4	40.5	321
0.500	4.9	1062	21197	74.8	27.2	239
0.375	4.5	996	22002	81.8	16.1	155
0.250	4.3	947	22733	88.2	7.7	80
0.000	4.1	904	23370	95.9	0.0	0

METRIC DATA



Orifice (mm)	Amps	Watts (In)	RPM	Vac (mm H ₂ O)	Flow (L/Sec)	Air Watts
48.0	6.1	1318	18879	192	59.0	112
40.0	6.2	1330	18800	372	56.3	204
30.0	6.2	1339	18706	830	47.7	386
23.0	6.0	1287	19111	1283	34.9	437
19.0	5.6	1210	19716	1530	25.9	389
16.0	5.2	1141	20401	1705	19.4	324
13.0	4.9	1070	21120	1881	13.5	247
10.0	4.6	1006	21881	2051	8.4	168
6.5	4.3	949	22696	2232	3.8	84
0.0	4.1	904	23370	2436	0.0	0

Note: Metric performance data is calculated from the ASTM data above.

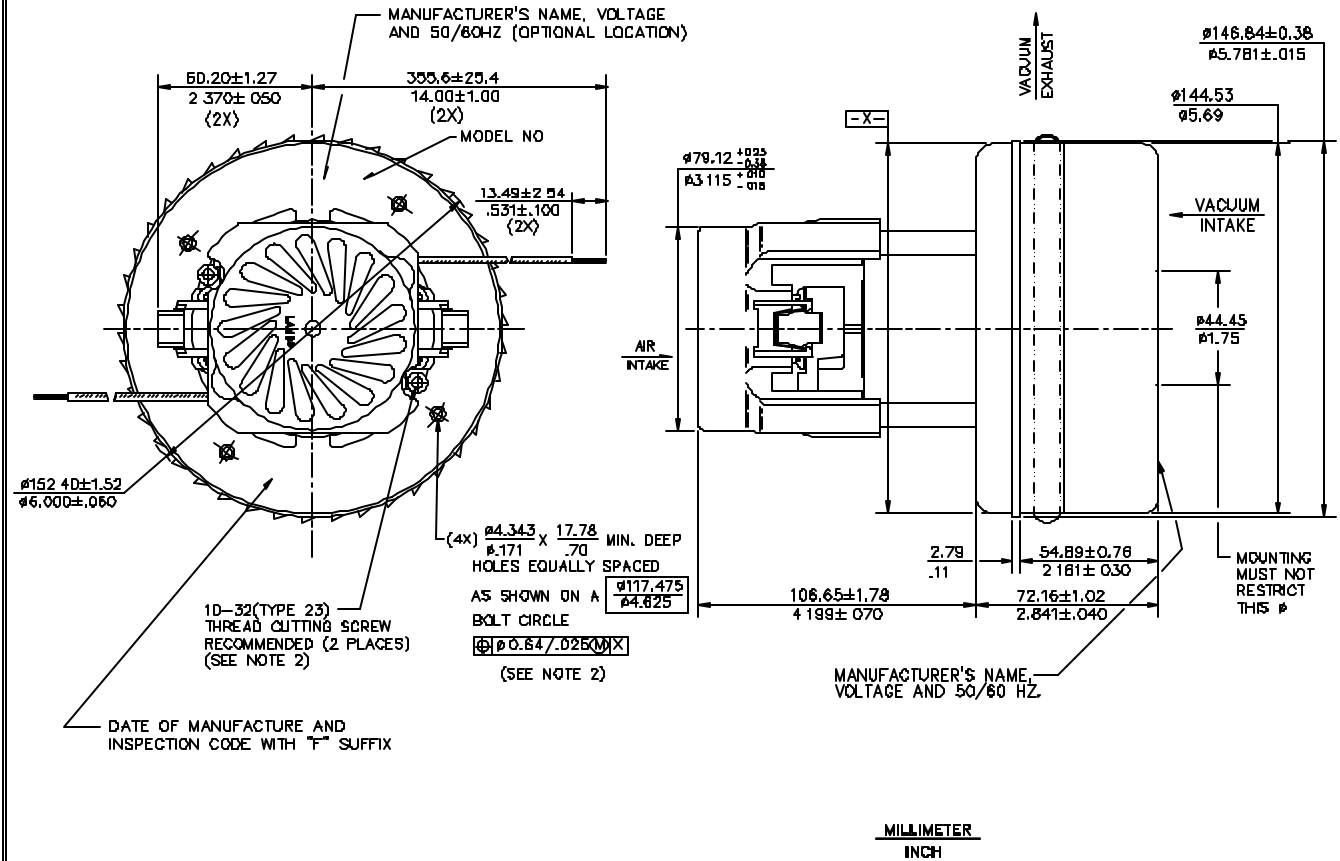
* Data represents performance of a typical motor sampled from a large production quantity. Individual motor data may vary to normal manufacturing variations

Test Specs:	230 volts	Minimum Sealed Vacuum:	89.0"	ORIFICE:	13mm	Minimum Vacuum:	65.0"	Maximum Watts:	1150
-------------	-----------	------------------------	-------	----------	------	-----------------	-------	----------------	------

DIMENSIONS

NOTES:

1. LEADS: 18GA STRANDED, LEADS CAN BE ANY COLOR EXCEPT GREEN OR GREEN WITH YELLOW STRIPE.
2. GROUNDING OR EARTHING PROVISIONS USE HOLES AS INDICATED FOR GROUNDING OR EARTHING REFER TO APPROPRIATE LISTING OR REGULATORY AGENCY FOR PROPER METHOD OF GROUNDING OR EARTHING.



IMPORTANT NOTE: Pictorial and dimensional data are subject to change without notice. Contact factory for current revision levels.

WARNING - When using AMETEK/Lamb Electric bypass motors in machines that come in contact with foam, liquid (including water) or other foreign substances, the machine must be designed and constructed to prevent those substances from reaching the fan system, motor housing and electrical components. Lamb vacuum motors other than hazardous duty models should not be applied in machines that come in contact with dry chemicals or other volatile materials. Failure to observe these precautions could cause flashing (depending on volatility) or electrical shock which could result in property damage and severe bodily injury, including death in extreme cases. All applications incorporating Lamb motors should be submitted to appropriate organizations or agencies for testing specifically related to the safety of your equipment.

AMETEK/Lamb Electric Division
627 Lake Street
Kent, Ohio 44240
U.S.A.
Tel: (330) 673-3451
Fax: (330) 673-8994

Ametek GmbH
Weilimdorfer Str. 47
D-70825 Korntal-Munchingen
Germany
Phone: + 49-711-838-7876
Fax: + 49-711-838-7862

AMETEK/Singapore Private Limited
10 Ang Mo Kio Street 65
05-12 Techpoint
Singapore 2056
Tel: + 65-484-2388
Fax: + 65-481-6588