



AMETEK LAMB ELECTRIC

Product Bulletin

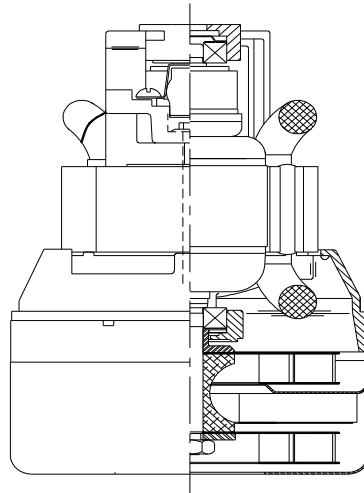
Model: 117080-00

DESCRIPTION

- Two stage
- 120 volts
- 4.3" / 106 mm diameter
- Dual ball bearings
- Single speed
- Thru-flow discharge
- Aluminum fan end bracket
- Aluminum commutator bracket

DESIGN APPLICATION

- Equipment operating in environments not requiring separation of working air from motor ventilating air
- Designed to handle clean, dry, filtered air only

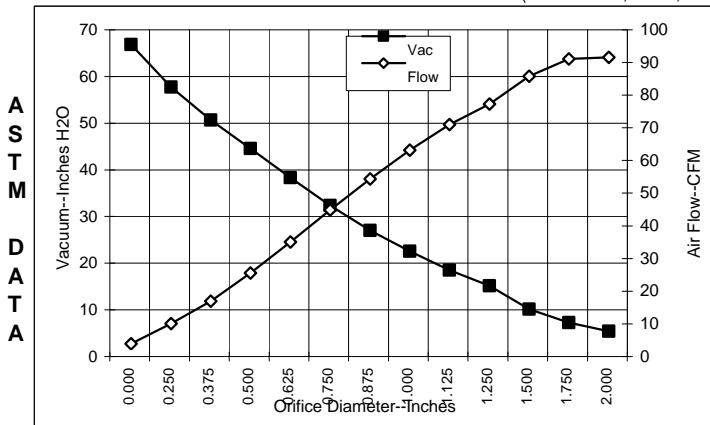


SPECIAL FEATURES

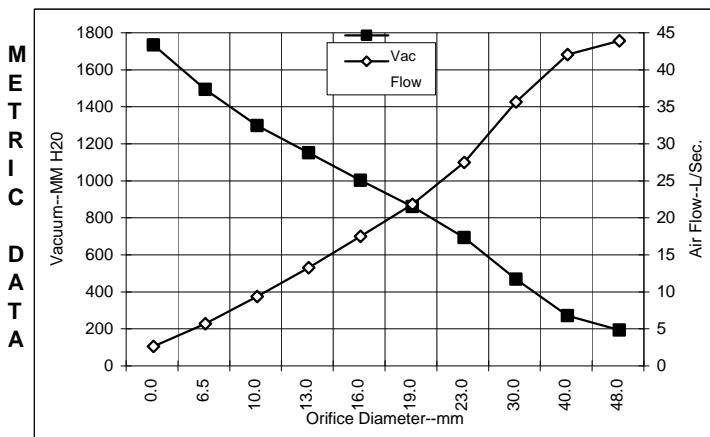
- Suitable for 120 volt AC operation, 50/60 Hz
- UL recognized, category PRGY2 (E47185)
- CSA certified, class 1611 01 (LR31393)
- Provision for grounding
- The Lamb vacuum motor line offers a wide range of performance levels to meet design needs

TYPICAL MOTOR PERFORMANCE.*

(At 120 volts, 60Hz, test data is corrected to standard conditions of 29.92 Hg, 68° F.)



Orifice (Inches)	Amps	Watts (In)	RPM	Vac (In.H2O)	Flow (CFM)	Air Watts
2.000	6.4	753	19731	2.7	87.7	28
1.750	6.4	753	19727	4.5	87.2	47
1.500	6.4	754	19764	7.4	81.9	71
1.250	6.3	750	19882	12.4	73.4	107
1.125	6.3	740	20054	15.8	67.1	124
1.000	6.1	726	20338	19.8	59.3	138
0.875	5.9	702	20758	24.3	50.4	144
0.750	5.6	672	21496	29.6	40.9	142
0.625	5.2	623	22486	35.6	31.1	130
0.500	4.8	575	23628	41.8	21.6	106
0.375	4.4	531	24721	47.9	13.0	73
0.250	4.1	500	26065	55.0	6.2	40
0.000	3.7	465	27416	64.1	0.0	0



Orifice (mm)	Amps	Watts (In)	RPM	Vac (mm H2O)	Flow (L/Sec)	Air Watts
48.0	6.4	753	19729	89	41.3	36
40.0	6.4	754	19753	166	39.4	64
30.0	6.3	745	19977	362	33.0	116
23.0	6.0	708	20653	589	24.8	142
19.0	5.6	671	21516	755	19.2	142
16.0	5.2	625	22446	898	14.9	131
13.0	4.8	580	23514	1046	10.6	108
10.0	4.5	538	24557	1193	6.7	78
6.5	4.2	502	25998	1388	3.1	42
0.0	3.7	465	27416	1628	0.0	0

Note: Metric performance data is calculated from the ASTM data above.

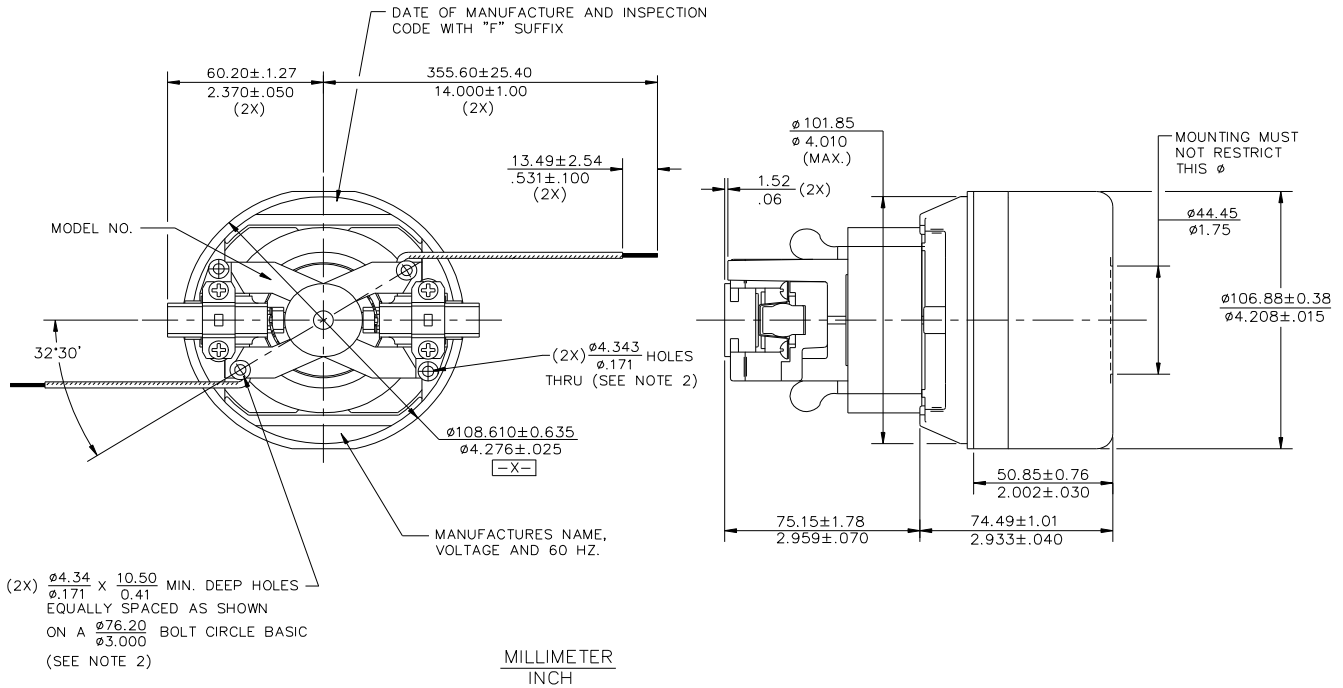
* Data represents performance of a typical motor sampled from a large production quantity. Individual motor data may vary to normal manufacturing variations.

Test Specs: 120 volts	Minimum Sealed Vacuum:	ORIFICE: 7/8"	Minimum Vacuum: 22.0"	Maximum Watts: 780
-----------------------	------------------------	---------------	-----------------------	--------------------

DIMENSIONS

NOTES:

- 1) LEADS: 18 GA. STRANDED. LEADS CAN BE ANY COLOR EXCEPT GREEN OR GREEN WITH YELLOW STRIPE.
- 2) GROUNDING OR EARTHING PROVISION: USE HOLES AS INDICATED FOR GROUNDING OR EARTHING. REFER TO APPROPRIATE LISTING OR REGULATORY AGENCY FOR PROPER METHOD OF GROUNDING OR EARTHING.



IMPORTANT NOTE: Pictorial and dimensional data are subject to change without notice. Contact factory for current revision levels.

WARNING - Ametek/Lamb Electric thru-flow vacuum motors must never be used in applications in which wet or moist conditions are involved, where dry chemicals or other volatile materials are present or where airflow may be restricted or blocked. Such motors are designed to permit the vacuumed air to pass over the electrical winding to cool it. Thus any foam, liquid (including water), dry chemical or other foreign substance will come in contact with electrical conductors which could cause combustion (depending on volatility) or electrical shock. Failure to observe these precautions could result in property damage and severe personal injury, including death in extreme cases. All applications incorporating Lamb motors should be submitted to Underwriters Laboratories Inc. or other appropriate organizations or agencies for testing specifically related to the safety of your equipment.

AMETEK/Lamb Electric Division
 627 Lake Street
 Kent, Ohio 44240
 U.S.A.
 Tel: (330) 673-3451
 Fax: (330) 673-8994

Ametek GmbH
 P. O. Box 1251
 D-71667 Marbach
 Germany
 Phone: + 49-714-484-9512
 Fax: + 49-714-484-9513

AMETEK/Singapore Private Limited
 10 Ang Mo Kio Street 65
 # 05-12 Techpoint
 Singapore 2056
 Tel: + 65-484-2388
 Fax: + 65-481-6588