

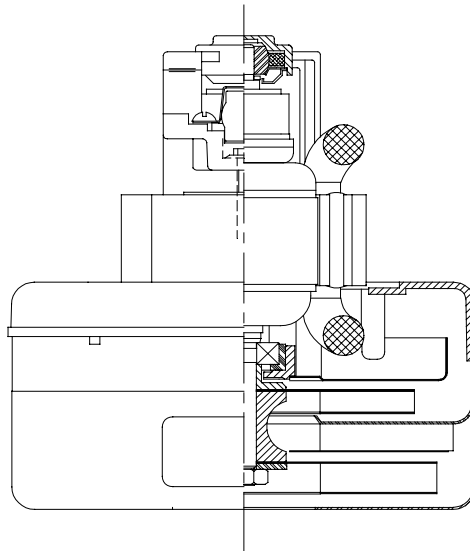


DESCRIPTION

- Two stage
- 240 volts
- 5.7"/145 mm diameter
- Ball/Sleeve bearings
- Single speed
- Thru-flow discharge
- Aluminum fan end bracket
- Aluminum commutator bracket

DESIGN APPLICATION

- Equipment operating in environments not requiring separation of working air from motor ventilating air
- Designed to handle clean, dry, filtered air only

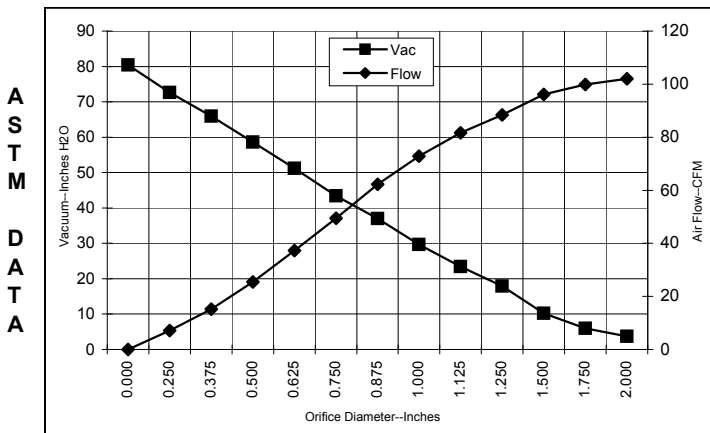


SPECIAL FEATURES

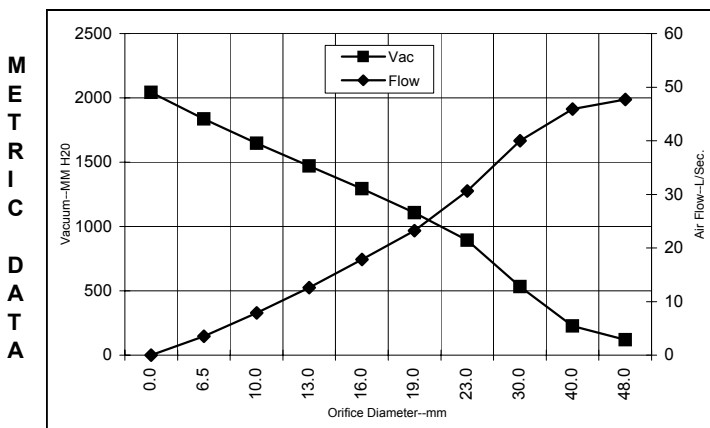
- Suitable for 240 volt AC operation, 50/60 Hz
- UL recognized, category PRGY2 (E47185)
- Skeleton-frame design
- Provision for grounding
- The Lamb Electric vacuum motor line offers a wide range of performance levels to meet design needs

TYPICAL MOTOR PERFORMANCE.*

(At 240 volts, 60Hz, test data is corrected to standard conditions of 29.92 Hg, 68° F.)



Orifice (Inches)	Amps	Watts (In)	RPM	Vac (In.H ₂ O)	Flow (CFM)	Air Watts
2.000	3.6	817	19309	3.7	102.0	44
1.750	3.6	818	19245	6.0	99.8	70
1.500	3.6	819	19181	10.2	96.1	115
1.250	3.6	821	19118	17.9	88.4	186
1.125	3.6	817	19100	23.4	81.7	224
1.000	3.5	808	19100	29.7	72.8	254
0.875	3.5	794	19186	37.0	62.2	270
0.750	3.4	760	19550	43.4	49.5	252
0.625	3.2	723	20256	51.2	37.3	224
0.500	3.0	672	21103	58.6	25.5	176
0.375	2.7	613	22191	66.0	15.2	118
0.250	2.4	559	23322	72.6	7.1	61
0.000	2.2	517	24400	80.4	0.0	0



Orifice (mm)	Amps	Watts (In)	RPM	Vac (mm H ₂ O)	Flow (L/Sec)	Air Watts
48.0	3.6	817	19281	120	47.7	55
40.0	3.6	819	19200	228	45.9	102
30.0	3.6	819	19108	531	40.0	207
23.0	3.5	798	19165	893	30.6	266
19.0	3.4	759	19564	1106	23.2	251
16.0	3.2	724	20228	1292	17.8	225
13.0	3.0	677	21018	1470	12.6	181
10.0	2.7	622	22028	1647	7.9	127
6.5	2.4	562	23265	1836	3.5	63
0.0	2.2	517	24400	2042	0.0	0

Note: Metric performance data is calculated from the ASTM data above.

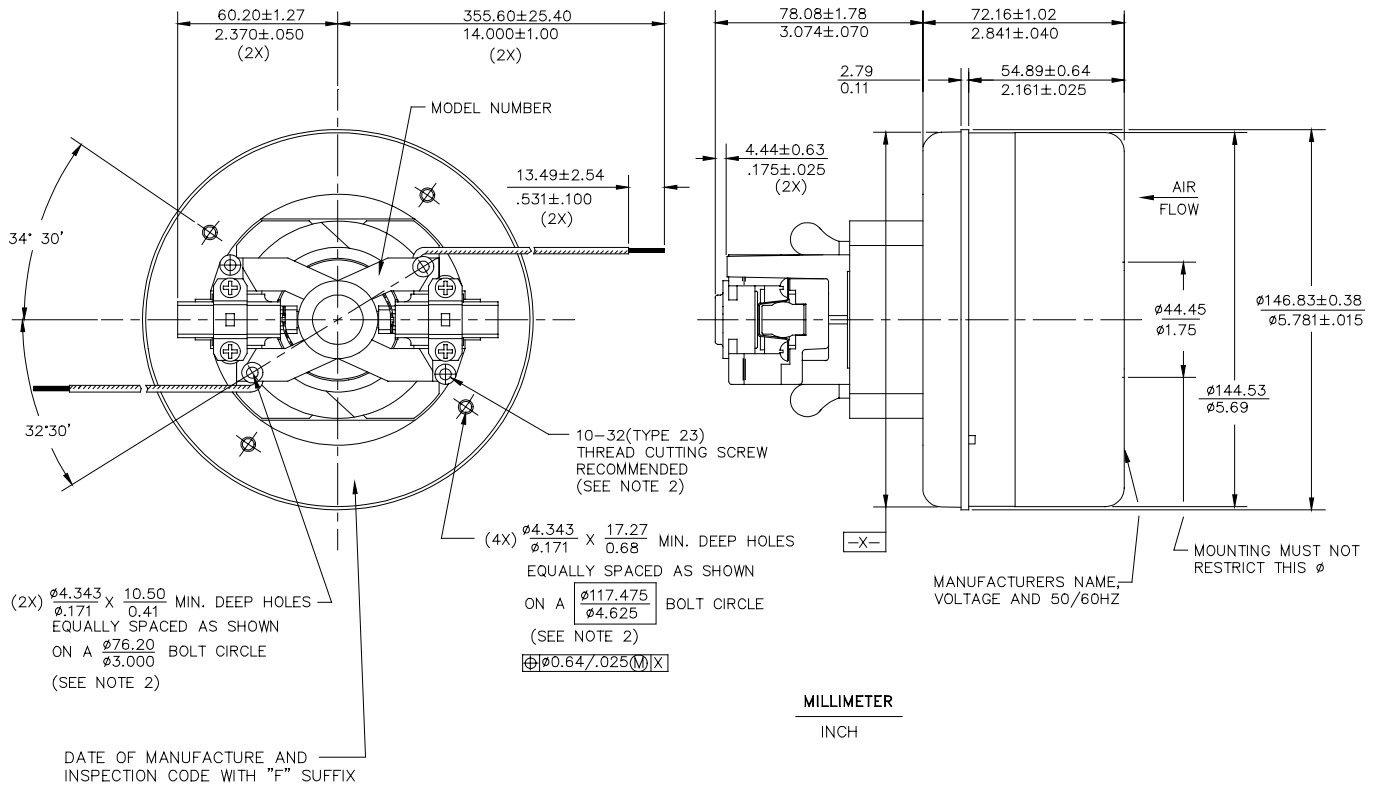
* Data represents performance of a typical motor sampled from a large production quantity. Individual motor data may vary due to normal manufacturing variations.

Test Specs:	240 volts	Minimum Sealed Vacuum:	77.0"	ORIFICE:	13 mm	Minimum Vacuum:	56.0"	Maximum Watts:	780
-------------	-----------	------------------------	-------	----------	-------	-----------------	-------	----------------	-----

DIMENSIONS

NOTES:

- LEADS 18 GA. STRANDED. LEADS CAN BE ANY COLOR EXCEPT GREEN OR GREEN WITH YELLOW STRIPE.
- GROUNDING OR EARTHING PROVISIONS: USE HOLES AS INDICATED FOR GROUNDING OR EARTHING. REFER TO APPROPRIATE LISTING OR REGULATORY AGENCY FOR PROPER METHOD OF GROUNDING OR EARTHING.



IMPORTANT NOTE: Pictorial and dimensional data are subject to change without notice. Contact factory for current revision levels.

WARNING - AMETEK Lamb Electric thru-flow vacuum motors must never be used in applications in which wet or moist conditions are involved, where dry chemicals or other volatile materials are present, or where airflow may be restricted or blocked. Such motors are designed to permit the vacuumed air to pass over the electrical winding to cool it. Thus any foam, liquid (including water), dry chemical, or other foreign substance coming in contact with electrical conductors could cause combustion (depending on volatility) or electrical shock. Failure to observe these precautions could result in property damage and severe personal injury, including death in extreme cases. All applications incorporating Lamb Electric motors should be submitted to Underwriters Laboratories Inc. or other appropriate organizations or agencies for testing specifically related to the safety of your equipment.

AMETEK/Lamb Electric Division
627 Lake Street
Kent, Ohio 44240
U.S.A.
Tel: (330) 673-3451
Fax: (330) 673-8994

Ametek GmbH
P. O. Box 1251
D-71667 Marbach
Germany
Phone: + 49-714-484-9512
Fax: + 49-714-484-9513

AMETEK/Singapore Private Limited
10 Ang Mo Kio Street 65
05-12 Techpoint
Singapore 2056
Tel: + 65-484-2388
Fax: + 65-481-6588