



AMETEK
LAMB ELECTRIC

Product Bulletin

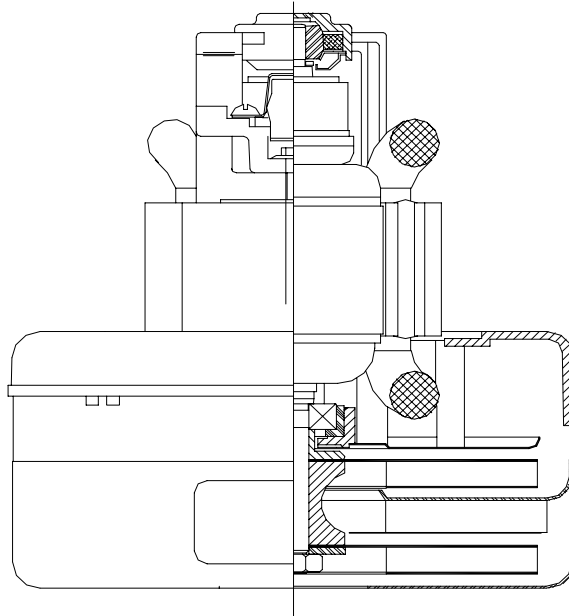
Model: 115826

DESCRIPTION

- Two stage
- 120 volts
- 5.7" / 145 mm diameter
- Ball / sleeve bearings
- Single speed
- Thru flow discharge
- Aluminum fan end bracket
- Aluminum commutator bracket

DESIGN APPLICATION

- Equipment operating in environments NOT requiring separation of working air from motor ventilating air
- Designed to handle clean, dry, filtered air only



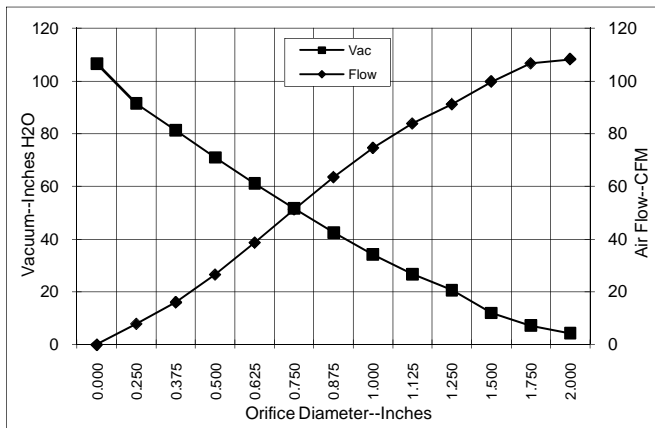
SPECIAL FEATURES

- Suitable for 120 volt AC operation, 50/60 Hz
- UL recognized, category PRGY2 (E47185)
- CSA certified, class 1611 01 (LR31393)
- Provision for grounding
- Skeleton frame design
- The Lamb vacuum motor line offers a wide range of performance levels to meet design needs

TYPICAL MOTOR PERFORMANCE.*

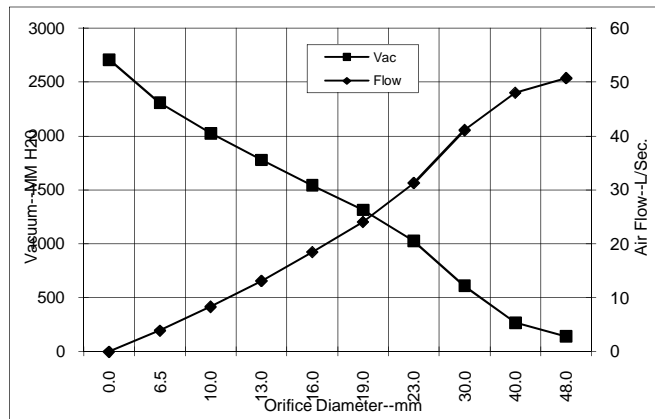
At 120 volts, 60Hz, test data is corrected to standard conditions of 29.92 Hg, 68°F.

ASTM DATA



Orifice (Inches)	Amps	Watts (In)	RPM	Vac (In.H2O)	Flow (CFM)	Air Watts
2.000	8.9	1023	19290	4.3	108.2	55
1.750	9.0	1032	19230	7.2	106.6	90
1.500	9.1	1047	19160	12.0	99.7	140
1.250	9.3	1065	19040	20.7	91.1	222
1.125	9.3	1067	19060	26.7	83.8	264
1.000	9.2	1056	19070	34.2	74.6	300
0.875	9.0	1034	19380	42.5	63.5	317
0.750	8.6	991	19810	51.6	51.3	311
0.625	8.1	931	20540	61.1	38.7	278
0.500	7.4	860	21520	71.0	26.6	222
0.375	6.7	779	22730	81.3	16.1	154
0.250	6.1	711	24010	91.4	7.9	85
0.000	5.6	655	25230	106.6	0.0	0

METRIC DATA



Orifice (mm)	Amps	Watts (In)	RPM	Vac (mm H2O)	Flow (L/Sec)	Air Watts
48.0	8.9	1027	19264	142	50.7	70
40.0	9.1	1043	19181	268	48.0	125
30.0	9.3	1066	19051	610	41.1	245
23.0	9.1	1040	19303	1026	31.3	313
19.0	8.6	990	19825	1315	24.1	311
16.0	8.1	933	20511	1542	18.5	279
13.0	7.5	867	21422	1777	13.1	227
10.0	6.8	791	22549	2025	8.3	164
6.5	6.1	714	23946	2309	3.9	88
0.0	5.6	655	25230	2708	0.0	0

Note: Metric performance data is calculated from the ASTM data above.

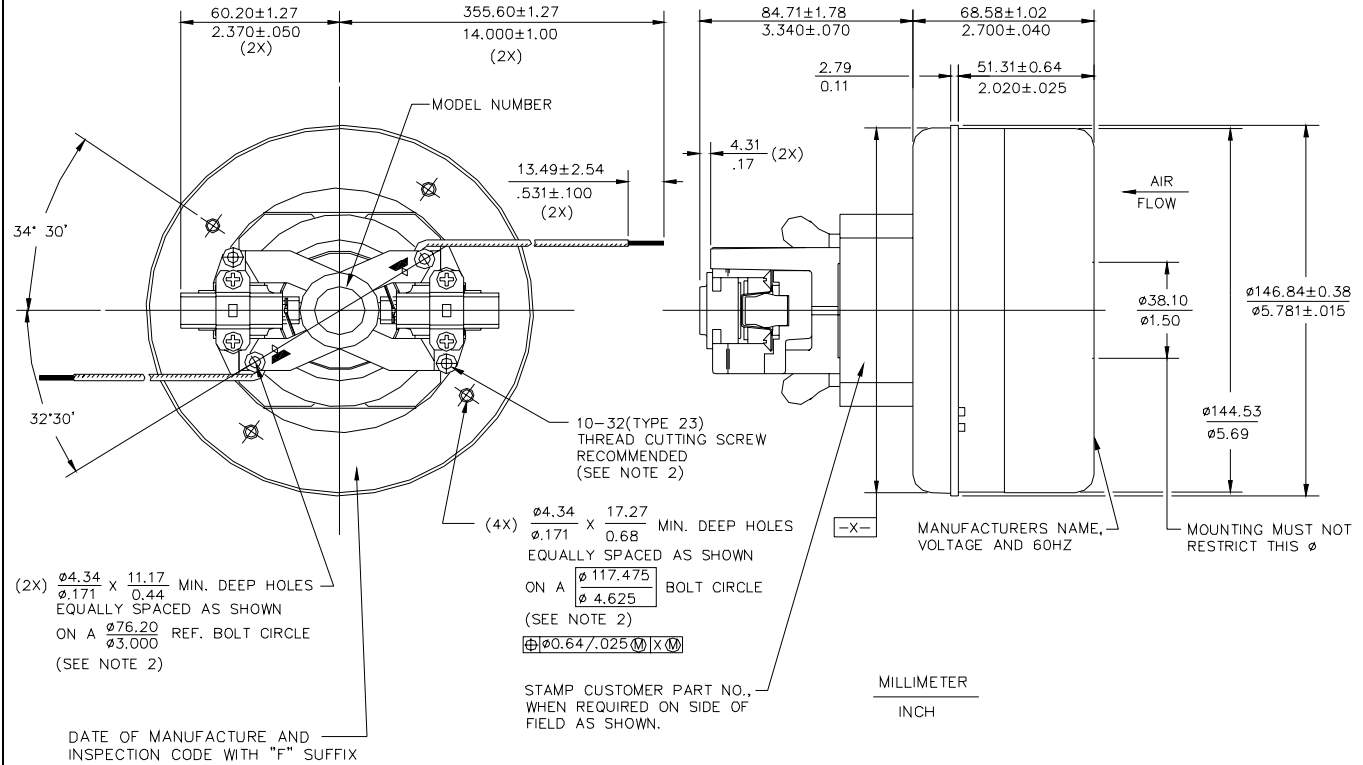
* Data represents performance of a typical motor sampled from a large production quantity. Individual motor data may vary to normal manufacturing variations.

Test Specs: 120 volts	Minimum Sealed Vacuum:	ORIFICE: 7/8"	Minimum Vacuum:	Maximum Watts:
------------------------------	-------------------------------	----------------------	------------------------	-----------------------

DIMENSIONS

NOTES:

1. LEADS: 18GA STRANDED, LEADS CAN BE ANY COLOR EXCEPT GREEN OR GREEN WITH YELLOW STRIPE.
2. GROUNDING OR EARTHING PROVISIONS: USE HOLES AS INDICATED FOR GROUNDING OR EARTHING. REFER TO APPROPRIATE LISTING OR REGULATORY AGENCY FOR PROPER METHOD OF GROUNDING OR EARTHING.



IMPORTANT NOTE: Pictorial and dimensional data are subject to change without notice. Contact factory for current revision levels.

WARNING - Ametek/Lamb Electric thru-flow vacuum motors must never be used in applications in which wet or moist conditions are involved, where dry chemicals or other volatile materials are present or where airflow may be restricted or blocked. Such motors are designed to permit the vacuumed air to pass over the electrical winding to cool it. Thus any foam, liquid (including water), dry chemical or other foreign substance will come in contact with electrical conductors which could cause combustion (depending on volatility) or electrical shock. Failure to observe these precautions could result in property damage and severe personal injury, including death in extreme cases. All applications incorporating Lamb motors should be submitted to Underwriters Laboratories Inc. or other appropriate organizations or agencies for testing specifically related to the safety of your equipment.

AMETEK/Lamb Electric Division
 627 Lake Street
 Kent, Ohio 44240
 U.S.A.
 Tel: (330) 673-3786 Fax: (330) 677-3812
 www.lambelectric.com