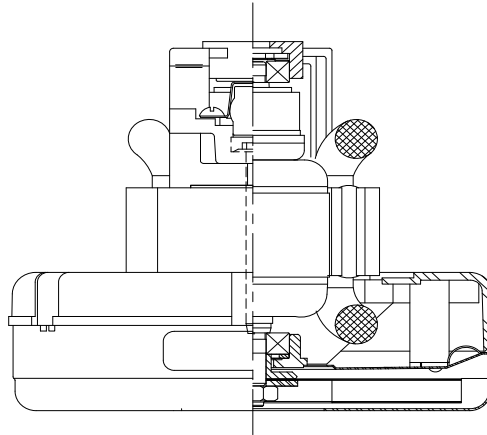


LAMB ELECTRIC

Model: 119654-00

DESCRIPTION

- One stage
- 230 volts
- 5.7"/145 mm diameter
- Double ball bearings
- Single speed
- Thru-flow discharge
- Thermoset fan end bracket
- Aluminum commutator bracket



SPECIAL FEATURES

- Suitable for 230 volt AC operation, 50/60 Hz
- UL recognized, category PRGY2 (E47185)
- No shaft extension
- Provision for grounding
- Skeleton-frame design
- The Lamb Electric vacuum motor line offers a wide range of performance levels to meet design needs

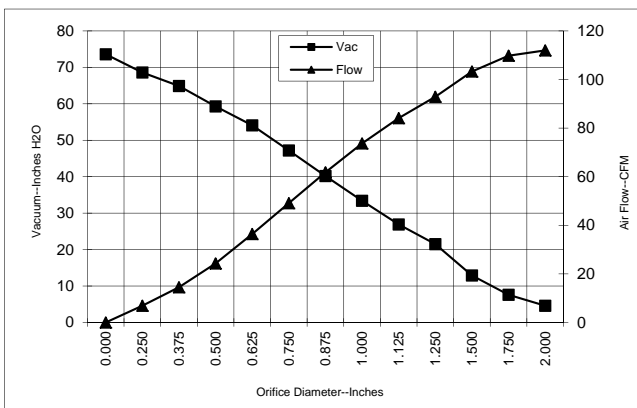
DESIGN APPLICATION

- Equipment operating in environments not requiring separation of working air from motor ventilating air
- Designed to handle clean, dry, filtered air only

TYPICAL MOTOR PERFORMANCE.*

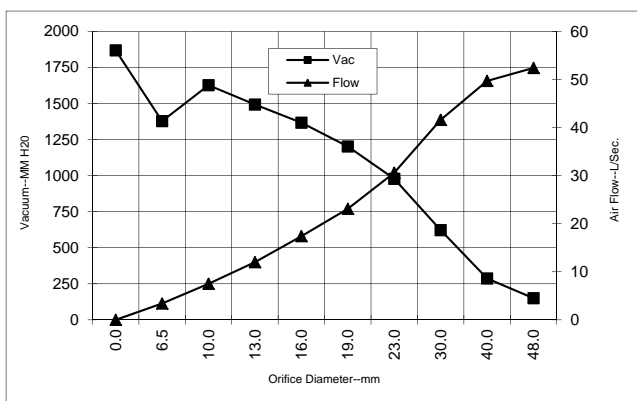
(At 230 volts, 50Hz, test data is corrected to standard conditions of 29.92 Hg, 68° F.)

ASTM DATA



Orifice (Inches)	Amps	Watts (In)	RPM	Vac (In.H ₂ O)	Flow (CFM)	Air Watts
2.000	5.0	1084	23640	4.6	112.0	61
1.750	5.1	1093	23540	7.6	109.8	98
1.500	5.1	1098	23540	12.9	103.3	156
1.250	5.0	1090	23540	21.5	92.9	235
1.125	5.0	1077	23740	26.9	84.1	266
1.000	4.8	1047	24140	33.4	73.7	289
0.875	4.6	1007	24540	40.2	61.8	292
0.750	4.4	954	25140	47.2	49.1	272
0.625	4.1	902	26130	54.1	36.4	231
0.500	3.8	842	26830	59.3	24.3	169
0.375	3.6	785	27930	64.9	14.5	111
0.250	3.3	739	29030	68.6	6.9	56
0.000	3.1	697	29920	73.6	0.0	0

METRIC DATA



Orifice (mm)	Amps	Watts (In)	RPM	Vac (mm H ₂ O)	Flow (L/Sec)	Air Watts
48.0	5.0	1088	23596	150	52.4	77
40.0	5.1	1097	23540	287	49.7	139
30.0	5.0	1083	23650	622	41.6	252
23.0	4.7	1017	24440	978	30.6	291
19.0	4.4	953	25160	1202	23.1	271
16.0	4.1	904	26090	1367	17.4	233
13.0	3.9	848	26760	1493	12.0	175
10.0	3.6	794	27765	1627	7.5	120
6.5	3.3	741	28975	1378	3.4	59
0.0	3.1	697	29920	1869	0.0	0

Note: Metric performance data is calculated from the ASTM data above.

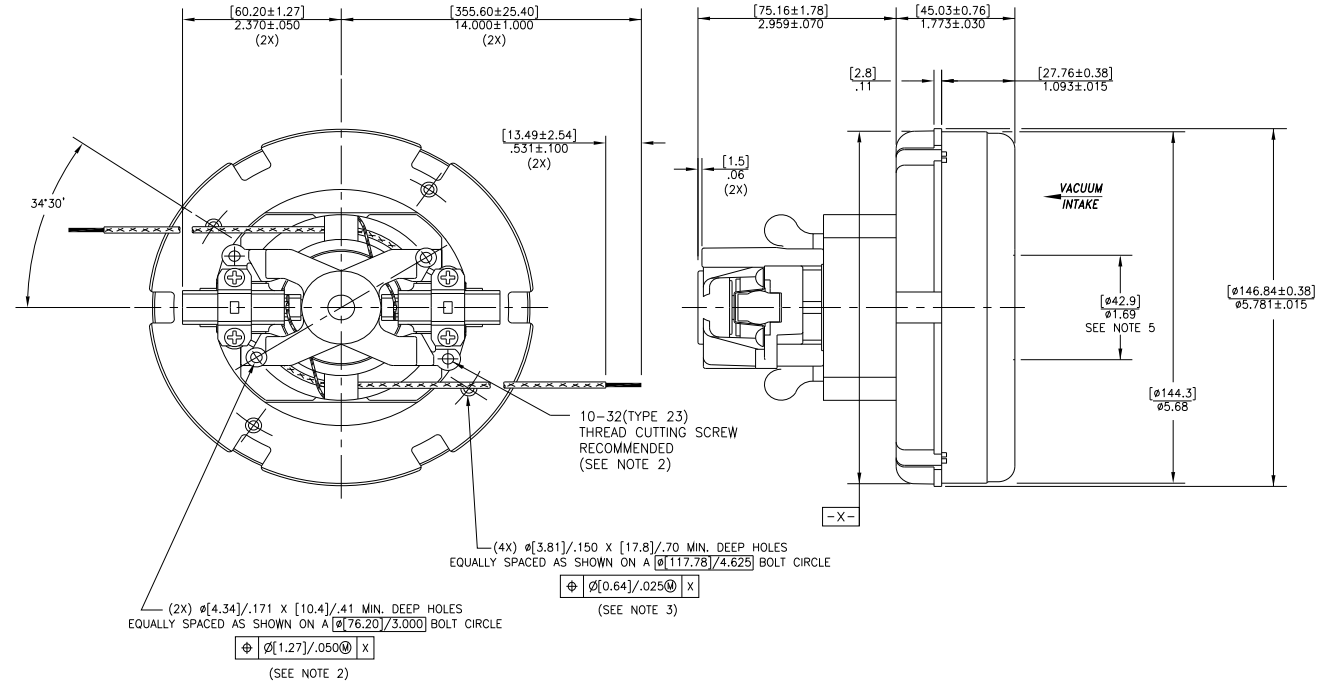
* Data represents performance of a typical motor sampled from a large production quantity. Individual motor data may vary due to normal manufacturing variations.

Test Specs:	230 volts	Minimum Sealed Vacuum:	64.0"	ORIFICE:	7/8 "	Minimum Vacuum:	36.0"	Maximum Watts:	1035
--------------------	-----------	-------------------------------	-------	-----------------	-------	------------------------	-------	-----------------------	------

DIMENSIONS

NOTES:

1. LEADS: 18GA STRANDED. LEADS CAN BE ANY COLOR EXCEPT GREEN OR GREEN WITH YELLOW STRIPE.
2. GROUNDING OR EARTHING PROVISIONS: USE HOLES AS INDICATED FOR GROUNDING OR EARTHING. REFER TO APPROPRIATE LISTING OR REGULATORY AGENCY FOR PROPER METHOD OF GROUNDING OR EARTHING.
3. RECOMMENDED SCREW SIZE 10-16 TYPE BT OR 25 THREAD CUTTING SCREW. MAXIMUM PENETRATION [17.40]/.685.
4. MOTOR IDENTIFICATION: MANUFACTURER'S NAME, MODEL NUMBER, VOLTAGE, FREQUENCY, INSPECTOR'S CODE, DATE OF MANUFACTURE, AGENCY RECOGNITION CODE; PLANT LOCATION CODE AND COUNTRY OF ORIGIN
5. MOUNTING MUST NOT RESTRICT THIS DIAMETER.



IMPORTANT NOTE: Pictorial and dimensional data are subject to change without notice. Contact factory for current revision levels.

WARNING - When using AMETEK Lamb Electric bypass motors in machines that come in contact with foam, liquid (including water), or other foreign substances, the machine must be designed and constructed to prevent those substances from reaching the fan system, motor housing, and electrical components. Lamb Electric vacuum motors other than hazardous duty models should not be applied in machines that come in contact with dry chemicals or other volatile materials. Failure to observe these precautions could cause flashing (depending on volatility) or electrical shock which could result in property damage and severe bodily injury, including death in extreme cases. All applications incorporating Lamb Electric motors should be submitted to appropriate organizations or agencies for testing specifically related to the safety of your equipment.

AMETEK Lamb Electric
 627 Lake Street
 Kent, Ohio 44240
 U.S.A.
 Tel: (330) 673-3451
 Fax: (330) 673-8994

AMETEK GmbH
 Dostojewskistrasse 10
 D-65187 Wiesbaden
 Germany
 Tel: 49-0611-989210
 Fax: 49-0611-9892110

AMETEK Motors (Shanghai) Co., Ltd.
 No. 1 AMETEK Road, Jiu Ting Economic
 Development Zone, Song Jiang, Shanghai
 201615, China
 Tel: 8621-5763-2408
 Fax: 8621-5763-2411